



Sustainability and Corporate Responsibility

The Royal Agricultural Society of NSW (RAS) www.rasnsw.com.au is a not-for-profit organisation founded in 1822 committed to supporting agricultural development and rural communities in NSW.

The RAS operates Sydney Showground at Sydney Olympic Park. Full details of the Sydney Olympic Park sustainability and environmental information, of which we are part of, can be found at www.sopa.nsw.gov.au/environment

Sustainability Targets



Reduce site wide reliance on the grid



Maximising our investments in competitions and programs that support sustainable agricultural development and educate the community about food, fibre and farming

Sydney Showground, together with Sydney Olympic Park Authority have set a goal to achieve net zero carbon emissions by 2030 and actively work to minimise impact on the environment.



LOCATED WITHIN SYDNEY OLYMPIC PARK, A 6 STAR GREEN STAR COMMUNITIES RATING PRECINCT



ENVIRONMENTALLY SUSTAINABLE PRACTICES



SUPPORTING REGIONAL AND RURAL COMMUNITIES

The 6 Star Green Star Communities rating is in recognition of design excellence in the redevelopment of the Park's urban core, active living opportunities, efforts to protect and enhance biodiversity, and environmental legacy projects from the Sydney 2000 Olympic Games. Awarded by Green Building Council of Australia.

Sustainability Achievements

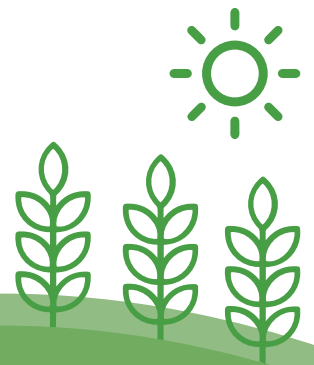
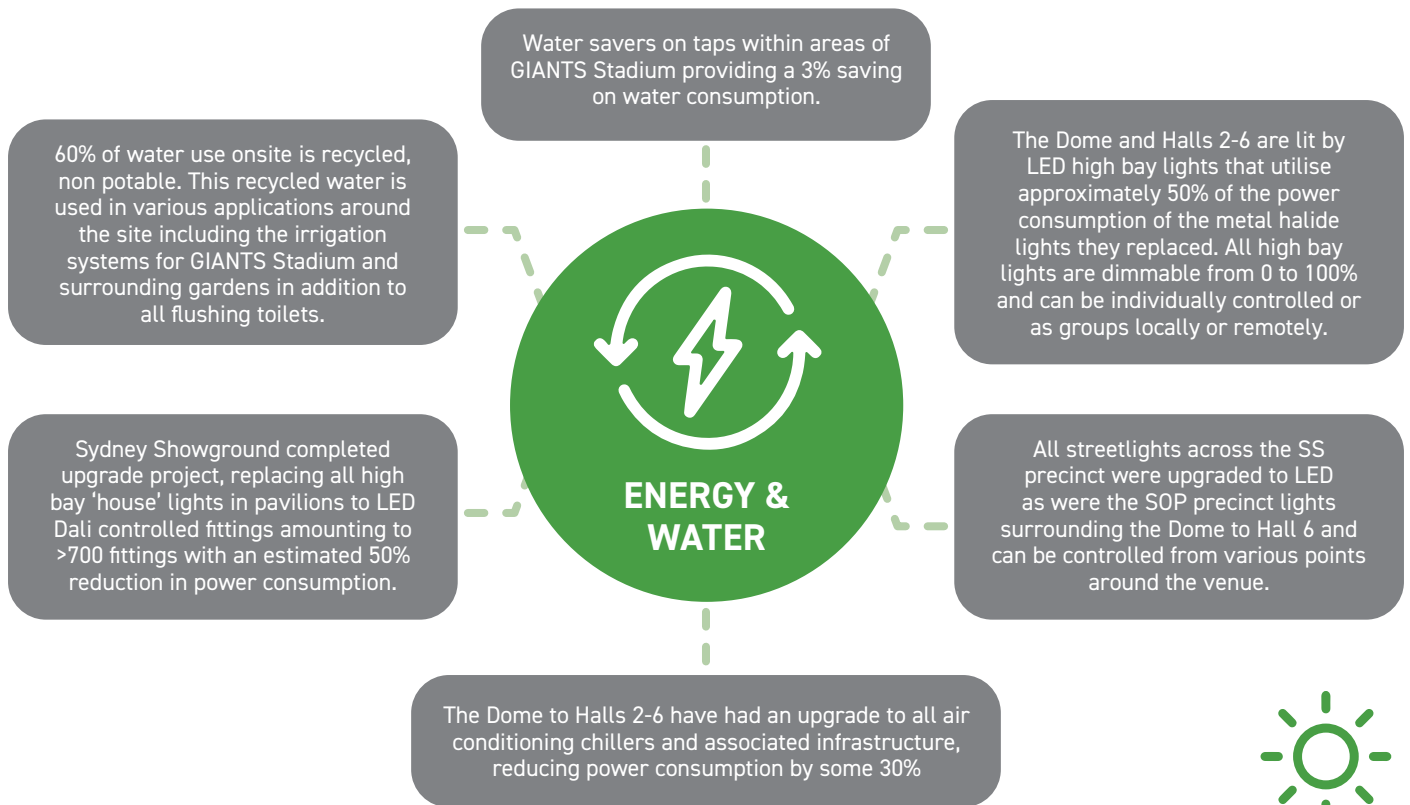


ENVIRONMENTALLY SUSTAINABLE PRACTICES

Sydney Showground is connected to the Sydney Olympic Park Water Reclamation and Management Scheme (WRAMS), which recycles water from sewage and stormwater to supply irrigation, ornamental fountain and toilet flushing applications across Sydney Olympic Park and in the suburb of Newington including Sydney Showground.

This recycled water is supplied by Sydney Water at a lower cost than potable water (drinking water). Sydney Showground uses this resource to irrigate its grounds including GIANTS Stadium as well as for the flushing of toilets.

WRAMS saves more than 850 million litres of potable water annually and treats approximately 550 million litres of sewage each year, which would otherwise be discharged to ocean outfalls.



Corporate Social Responsibility

The RAS plays a crucial and significant role supporting regional and rural communities in various ways including, but not limited to:

- \$7m+ a year reinvested into agriculture and regional communities. All revenue generated through Sydney Showground (after costs) are reinvested into the various programs.
- Engaging, educating and informing our communities on the value of sustainable agriculture and quality produce through events which support agricultural excellence and innovation.
- Improving the quality of agricultural produce and animal breeds through competitions we facilitate and fund.
- Valuing and maintaining our facilities and assets at Sydney Showground, providing NSW with an agricultural showcase site unparalleled globally.
- Maximising our investments in competitions and programs that support sustainable agricultural development and educate the community about food, fibre and farming.
- The RAS also has a charitable arm of the business, the RAS Foundation (RASf). The RASf builds strong, vibrant rural communities in NSW through investment in education, training and skills development by providing grants and scholarships.
- The RAS has been providing an education program to the teachers and students of NSW for the past 12 years. Thanks to the National Landcare Program, the RAS Edu team now delivers to approx. 500 students every month until the end of 2023. Focus is on water management, GHGs, best practice biosecurity and sustainable practices in farming.
- Staff health & wellbeing is supported by an onsite RAS Fitness program.